

VIVEZA[®] 2 Precise Selective Photo Editing

Lesson 6: Using Levels & Curves And Control Points

Many images benefit from adding an s-curve to the image with a curves tool, adding contrast throughout the image in a very natural and photographic way. Images that have objects that are already close to black or white however can lose detail after contrast is added. This lesson shows how control points can be used to bring lost details back in an image that had an s-curve applied with the Levels and Curves tool.

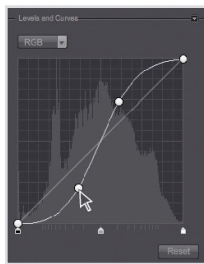


Before

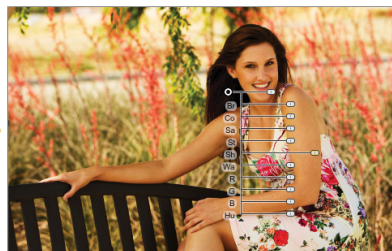
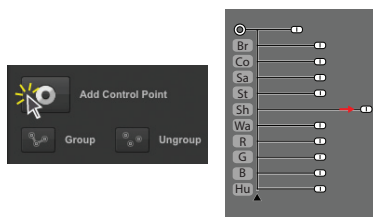


After

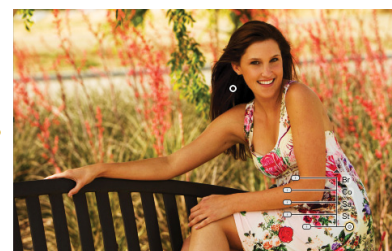
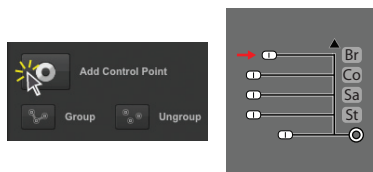
Lesson 6



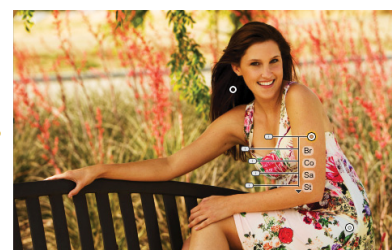
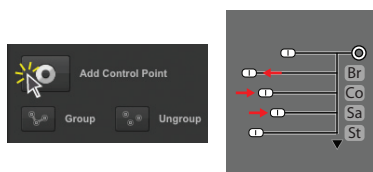
First, the Levels and Curves tool was used to add a strong s-curve to the image, adding contrast throughout the image with a natural and photographic effect.



Then, a control point was added to the hair and the Shadow Adjustments slider increased to bring details back into the hair.



Another control point was added to the dress with the Brightness slider decreased to bring details back into the dress.



Finally, another control point was added to the skin tones, with the Contrast slider reduced slightly and the Brightness and Saturation sliders adjusted to produce a more natural skin tone.